



2023

YEAR IN REVIEW



Colorado State University SPUR Campus HYDRO Building | Denver, CO
Winner of multiple awards in 2023, including CFSEI, NAIOP, ENR, ACEC

MARTIN/MARTIN'S VISION 2030



At the intersection of opportunity and execution, Martin/Martin is poised to lead the industry into the future while writing the next chapter of our engineering legacy. We embrace the opportunity to direct sustainability initiatives, lead our communities, drive innovation, and respond to climate challenges.



Sustainability is embedded in everything we do, and we acknowledge our obligation to improve the health of our planet. The future of community and client needs centers on reuse of buildings, high-performance low-energy designs, and thoughtful management of water. Our commitment to sustainable designs and our unmatched relationships empower us to positively impact our clients, communities, and planet.



Our **people** are everything. Through our pursuit to attract diverse and technically excellent teams, we seamlessly integrate our employees' character and ideas. We foster continuous career development, celebrate individual and team success, and empower our employees to advance their careers by pursuing their passions.



Our local legacy and regional reputation position us to intentionally expand our established offices and grow our **national influence** in strategic markets. This expansion complements our core business, and both work together seamlessly to provide new opportunities while maintaining our longstanding accomplishments.



Our experience and expertise position us to drive **innovation**, serving as thought leaders to advance the industry, and serving clients in progressive ways. We partner with forward-thinking institutions to shape codes, standards, and policy. We lead by example through engaging in organizations, leveraging new technologies, and solving complex problems to serve our clients and communities.



The foundation of our success remains simple: we understand our client's needs and respond in proactive and thoughtful ways.

WE ARE MARTIN/MARTIN AND WE

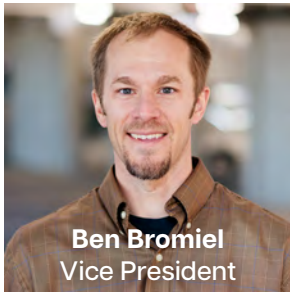
**DRIVE Innovation
LEAD Sustainability
INFLUENCE Nationally**

2023 YEAR IN REVIEW

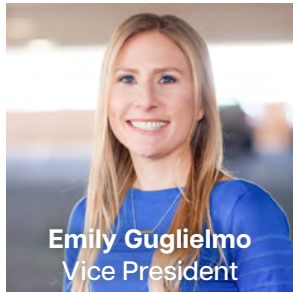


SHANE McCORMICK
PRESIDENT

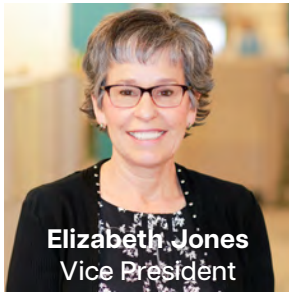
BOARD OF DIRECTORS



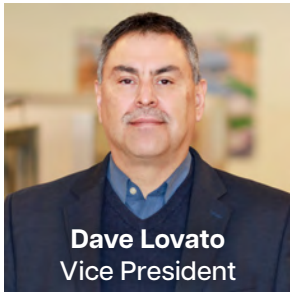
Ben Bromiel
Vice President



Emily Guglielmo
Vice President



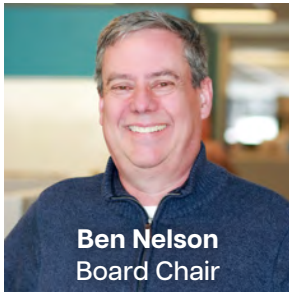
Elizabeth Jones
Vice President



Dave Lovato
Vice President



John Lund
Vice President



Ben Nelson
Board Chair



Matt Schlageter
Vice President

**35TH
ANNIVERSARY**
PG. 3

PEOPLE
PG. 6

**THOUGHT
LEADERSHIP**
PG. 18

INNOVATION
PG. 23

SUSTAINABILITY
PG. 27

**NATIONAL
INFLUENCE**
PG. 30

**CORPORATE
TEAMS**
PG. 33

**CIVIL
ENGINEERING**
PG. 34

**STRUCTURAL
ENGINEERING**
PG. 38

OFFICES
PG. 44

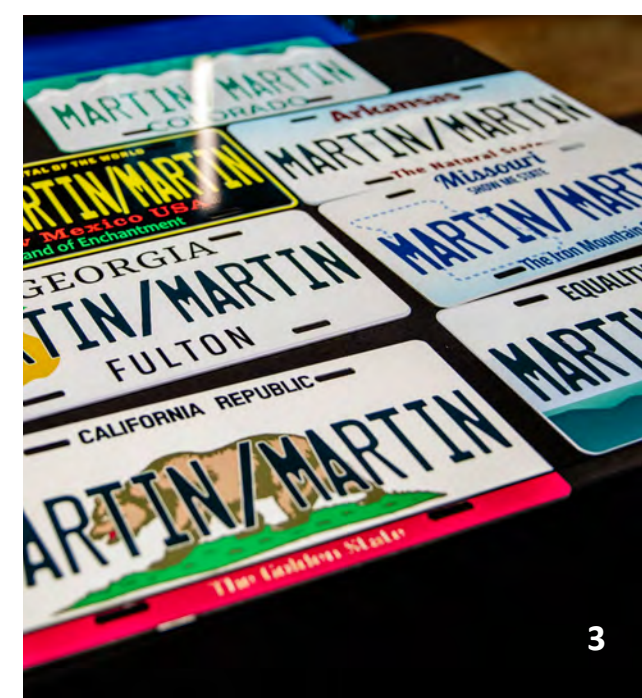
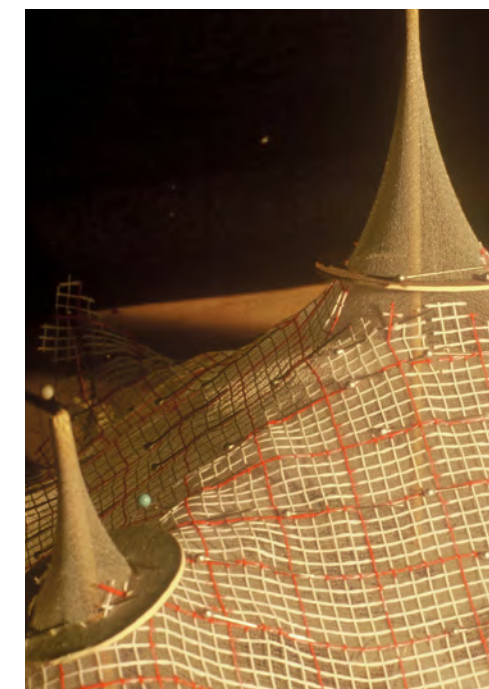


CELEBRATING 35 YEARS AS MARTIN/MARTIN

Milo Ketchum, a pioneer in teaching, engineering, and thin-shell concrete design, founded one of the world's first consulting engineering practices in 1945 in Denver. This business proved successful, grew to include more partners, and was renamed KKBNA (Ketchum, Konkel, Barrett, Nickel, Austin) in 1970. The firm was purchased by the Martin Associates Group in 1988, adopting the name Martin/Martin. In 2008, we became employee-owned.

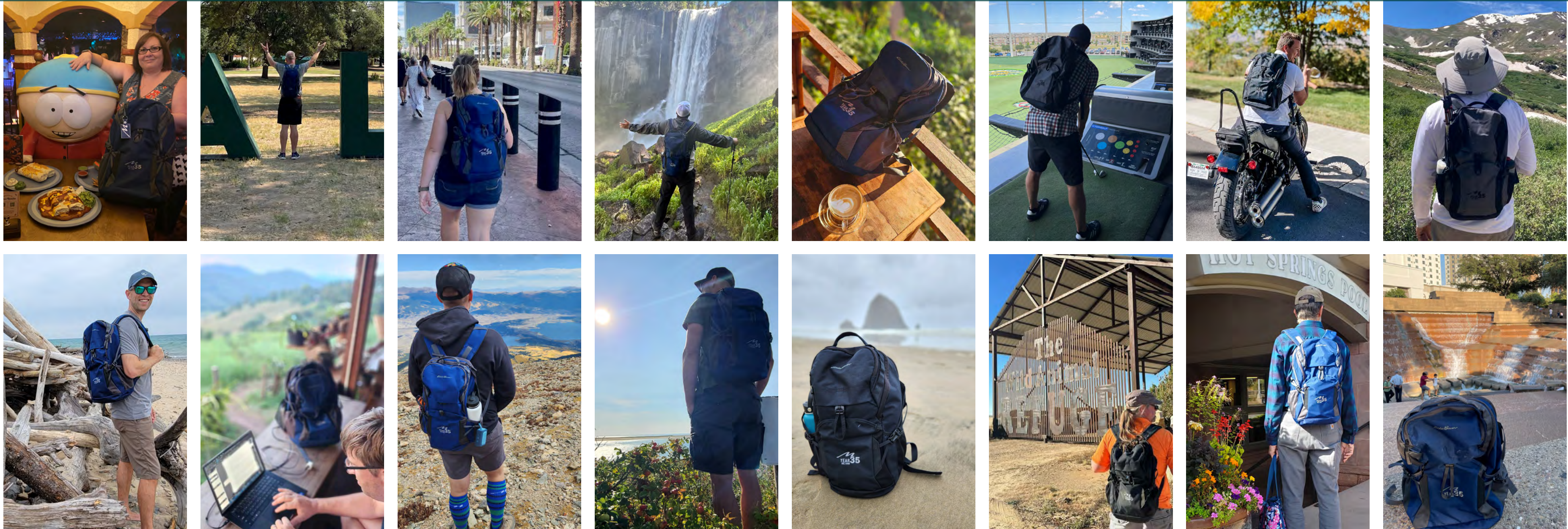
This year, we celebrated our 35th anniversary as Martin/Martin! It is our passion to provide quality engineering and consulting services to our clients, with integrity, professionalism, and technical excellence.

We are grateful for the trust and loyalty of our employees, clients, and trade partners. You have been instrumental in our success and growth. We look forward to continuing our journey with you as we strive to uphold our values and vision in the years ahead. Thank you for being part of our story! Hopefully, you were able to swing by our Open House in Lakewood this past September and enjoy a s'more or two.





OUR “YEAR 35” BACKPACKS HAVE BEEN AROUND THE WORLD!





The Arkins Promenade recaptured blighted space in Denver's River North Art District.

2023 RETIREMENTS

We are grateful for the contributions of our retirees who have dedicated their time and talents to Martin/Martin. We wish them all the best on their next adventure, whether it is traveling, volunteering, or pursuing a new passion. They have earned this opportunity to enjoy life and explore new possibilities. Congratulations and thank you for everything!



Paul Doak, PE, SE, LEED AP has been with Martin/Martin for 42 years. He has a passion for laboratory and research-related projects, and also has worked on the structural design of sports and cultural facilities, resorts, office buildings, medical facilities, schools, commercial buildings, correctional facilities, seismic rehabilitation, and water treatment plant structures.



Mike McAffrey, PE, in his 45 years at Martin/Martin, provided structural design for high rise buildings, corporate headquarters, commercial, criminal justice, airports, and public administration facilities. He has also completed hundreds of tenant improvement projects, many of which were in high rise and other buildings he had originally designed.



Dave Villella has 42 years of experience in the industry. Dave applied his construction experience with curtain walls and exterior metal wall systems, including unitized metal wall panels, to work as a project manager on the building envelope team. He investigated exterior walls and waterproofing systems for condition, repairs, and replacement projects.



Renée Schonberger has had many roles in her 16+ years with Martin/Martin. In the 80s, she was a drafter, then transitioned to CADD. Her signature project was managing the production of structural drawings for Coors Field. After a 20-year hiatus, she returned from her position as a school librarian, bringing her research and database expertise to manage our marketing database.

2023 NEW HIRES

- Headquarters
- Branch Office
- Remote Employee

4 IN CHEYENNE

**3 IN THE
BAY AREA**

**46 IN
LAKEWOOD**

2 IN AVON

**1 IN
ALBUQUERQUE**



**1 IN
KANSAS CITY**

3 IN ATLANTA

WELCOME THIS YEAR'S NEW EMPLOYEES



OUR PEOPLE

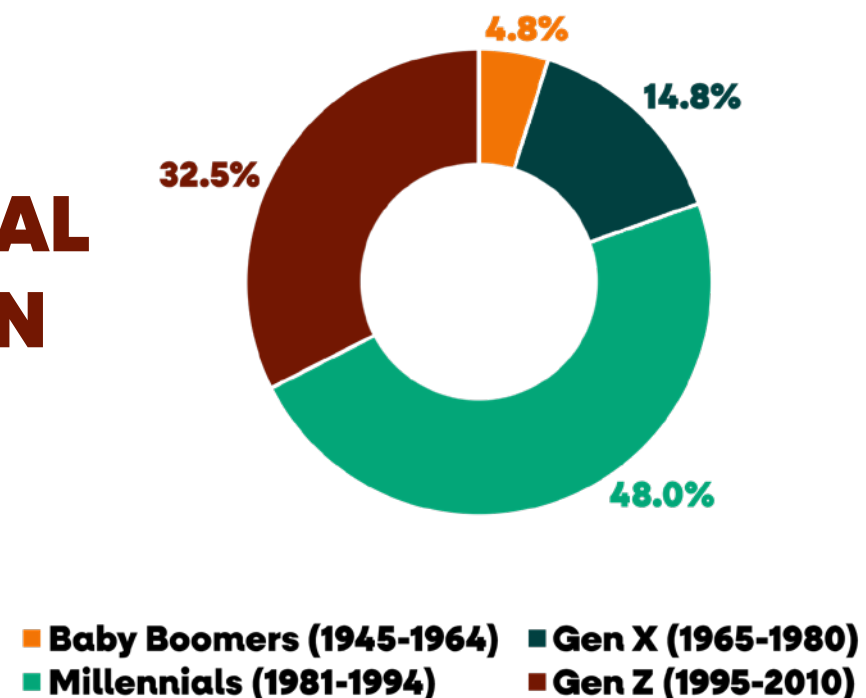


ON THE MOVE

This year, to keep up with our growing company, Martin/Martin hired a Talent Acquisition Manager. Welcome **Alex Lang** to our Human Resources team.

We also welcome a new Marketing Director. **Erica Toren** has pivoted from her 17 years of structural engineering experience to lead our Marketing team to new heights. She excels at business development and client relationships. Congratulations!

EMPLOYEE GENERATIONAL BREAKDOWN



CAREER DEVELOPMENT

Our company Vision identifies “our people are everything” and identifies the desire to “foster career development.” In that spirit, we have initiated an **internal project manager development program**. The program will be for those employees entering the project management phase of their career, guide them through a series of monthly meetings for a year, led by a combination of both in- and out-of-house experts. This program will enhance their skills in managing complex projects, leading teams, communicating effectively with stakeholders, and other business skills needed as the future leadership of Martin/Martin.



A MODERNIZATION OF OUR CAFETERIA IS UNDERWAY!



COMMITTEE REPORTS

JUSTICE, EQUITY, DIVERSITY, AND INCLUSION



Martin/Martin's JEDI Committee exists to evaluate processes, foster positive action, and support on-going opportunities to promote increased Justice, Equity, Diversity, and Inclusion within the company and the engineering community.

This year, we awarded two scholarships, attended several recruiting events, and hosted five high school interns through the

ACE Mentor Program, Denver School of Science and Technology, and Girls Inc. We also participated in outreach events for K-12 students at **Girls Explore STEM** and the **Porter Billups Leadership Academy**.

As part of the latest Lakewood office renovation, our input resulted in two updated mothers' rooms and a gender neutral restroom. And we celebrated International Women's Day and Pride Month as a company, and volunteered on MLK Day.



Andi Godfroy leading a session at ACE Summer Camp

MENTORSHIP



The intent of the Mentorship Committee is to establish an informal relationship in a more formal way. We promote connectedness and foster relationships among employees at all levels of experience and backgrounds. We currently have **134 mentor/mentee pairings** of employees.

They meet monthly, or even more often, to discuss career paths, difficulties, and solutions.



Jonathan Oltman and Tim Lack on a site visit

COMMITTEE REPORTS

MARTIN/MARTIN GIVES BACK



Our volunteering and community service committee, Gives Back clocked more than **650 hours** of employee volunteer time. The company provides 8 hours per employee of billable time to encourage community service and participation.

We partnered with Davis Partnership for a back-to-school drive, collecting **407 items**. Our employees raised **\$1,800** for Community Table and broke a sweat for trail maintenance at White Ranch Park. For the holidays, we created stockings for a local hospice, made ornaments for the Children’s Hospital, and partnered with Jefferson County’s Adopt-a-Family Program to bring holiday cheer and gifts to **65 children**.



White Ranch Park trail maintenance

SUSTAINABILITY



Martin/Martin recognizes that the built environment contributes nearly 40% of global greenhouse gas emissions. Our Sustainability Committee is actively working to reduce emissions through thoughtful project design coupled with progressive internal policies, releasing Version 1.0 of our internal Structural

Sustainability Guide endeavoring to meet our **SE2050 goal of net-zero embodied carbon**. We also completed various Life Cycle Assessments to understand the impact of a building’s embodied carbon footprint. We collaborated with the Office of the State Architect on the Buy Clean Colorado Act.

We presented at the **SEAC General Meeting** on changes that affect structural engineers. We also participated on a panel at the **NREL Cement and Decarbonization Workshop**, and taught nine AIA Sustainable Design presentations.



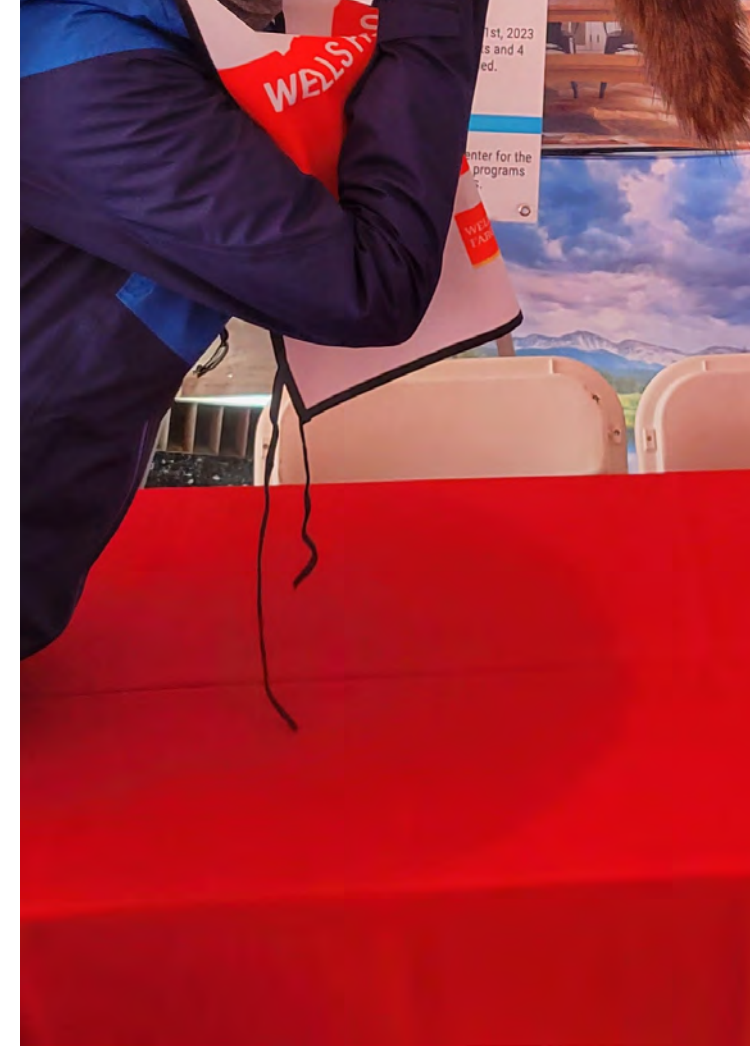
McKenzie Glass, left center, speaking at a concrete decarbonization panel.

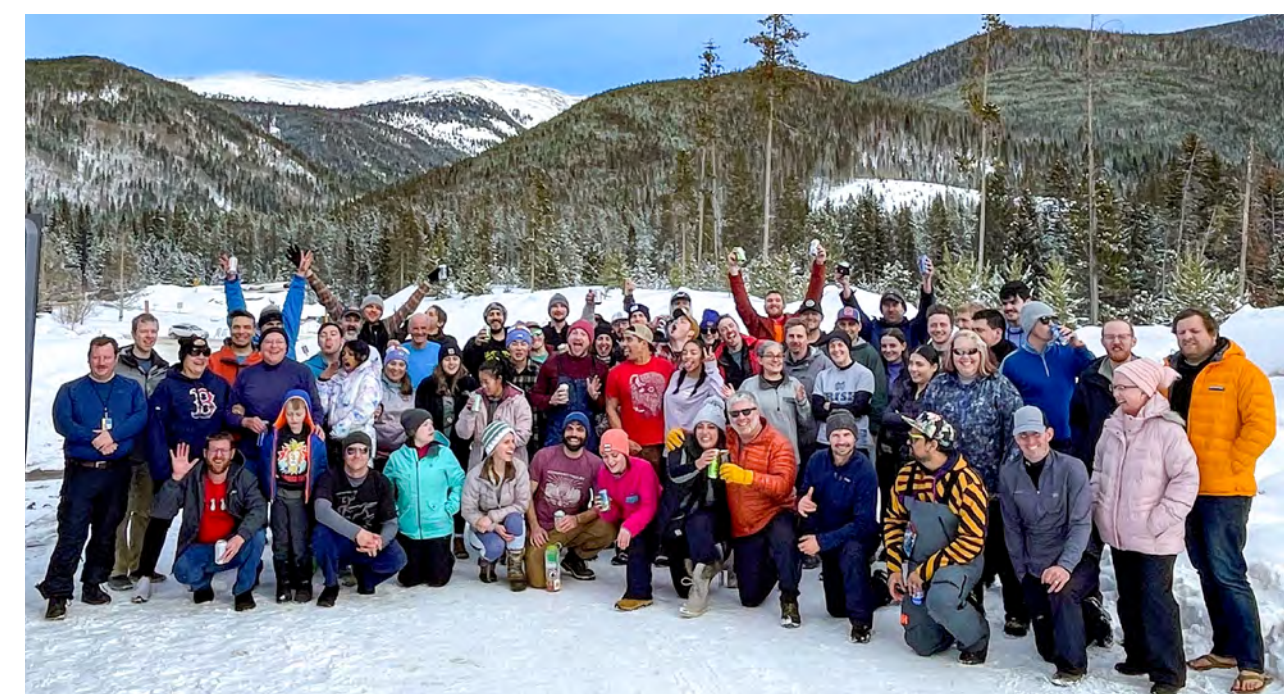


Focused on the connection between food and agriculture, the CSU SPUR Campus TERRA Building houses a culinary kitchen, several one-of-a-kind food laboratories for plant and soil testing, an outdoor garden, and a rooftop greenhouse.











UNIVERSITY of COLORADO HOSPITAL

ANSCHUTZ INPATIENT PAVILION 3

ANSCHUTZ INPATIENT PAVILION 2

Emergency

UHealth

ANSCHUTZ INPATIENT PAVILION

The UCHHealth Anschutz Inpatient Pavilion 3 won the ACEC Colorado Award of Excellence for Structural Systems.

THOUGHT LEADERSHIP

As thought leaders in the industry, Martin/Martin has a vision for the future of engineering and how it can contribute to a more sustainable, resilient, and inclusive world. We are not afraid to challenge the status quo and propose new ideas and approaches. We strive to be influential and respected by our peers and clients, and to inspire others to follow our example.



CHARLES PANKOW FOUNDATION



The Foundation serves as a catalyst to push the AEC industry forward with a better way to design and build, breaking down barriers to innovation. Martin/Martin’s own **Emily Guglielmo** sits on the Board of Directors.

Currently, they are investigating the diaphragm and vibration behavior of steel-cross laminated timber (CLT) floors through experimental testing and numerical simulations. Martin/Martin is one of the industry partners for this project.



AMERICAN CONCRETE INSTITUTE (ACI)

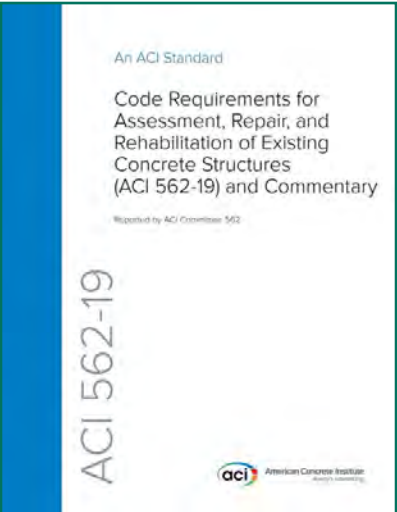
Martin/Martin has nine engineers who are members of the American Concrete Institute (ACI).



John Lund is chair of ACI’s “Repair Specifications” committee, publishing a major update to the concrete repair specifications in 2024. John is also a voting member of the ACI “Repair

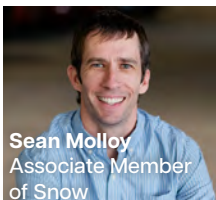
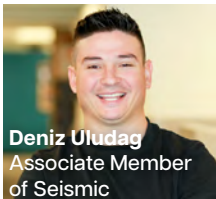
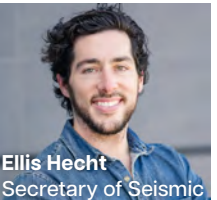
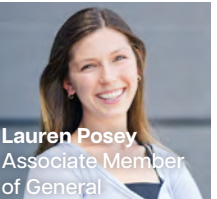
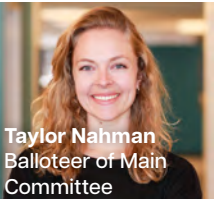
Code” committee, and is chair of the Chapter 5 “Loads” subcommittee. He is also a voting member of several other ACI committees focused on existing buildings and concrete repair. These include:

- ACI 546 “Repair”
- ACI 364 “Rehabilitation”
- ACI E706 “Concrete Repair Education”
- ACI 93-11 “Statistical Techniques for Assessment of Existing Concrete Structures”
- TAC “Repair and Rehabilitation Committee.”



ASCE 7

The American Society of Civil Engineers / Structural Engineering Institute (ASCE/SEI) 7, “Minimum Design Loads and Associated Criteria for Buildings and Other Structures” describes the means for determining design loads including dead, live, soil, flood, tsunami, snow, rain, atmospheric ice, seismic, and wind loads and their combinations for general structural design. Congratulations to the **Martin/Martin staff selected as leaders** for the ASCE 7-28 cycle.



LEADERS IN INDUSTRY EDUCATION

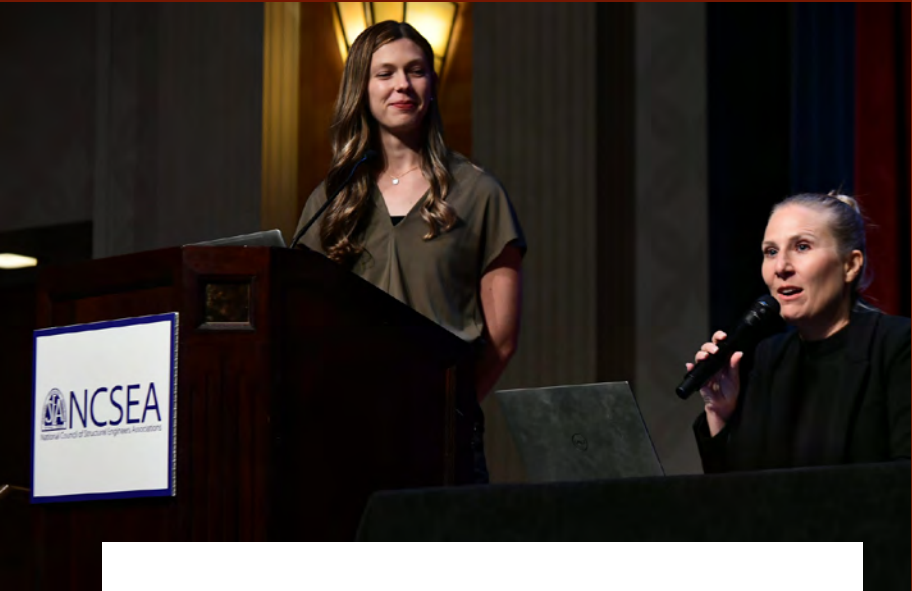
Martin/Martin was well-represented at the **National Council of Structural Engineers Association** annual Summit in Anaheim, California. We lead sessions, participated in committee work, and won several project awards.



Jen Seely leading a session at the AIA Practice + Design Conference in Keystone



Mel Hartzell giving a class on the SPUR HYDRO Building for the Structural Engineers Association of Colorado



Lauren Posey and Emily Guglielmo presented “Code, Standards, and the Practicing Engineer”



Scott Wert (top) shows off the Colorado Convention Center Expansion. And a visit from Donald Duck!



Zack Telljohann and Justin Meeks working the booth at the Colorado Rural Water Conference



Chad Peterson teaching a session on at the American Institute of Steel Construction's Steel Detailing Conference

MARTIN/MARTIN OFFERS 17 DIFFERENT AIA CONTINUING EDUCATION CLASSES



We bring the class to you at your convenience, and lunches are provided! The list of AIA classes offered is linked on the footer of our website: martinmartin.com

For the complete AIA CES class list, click here!

AIA/CES PRESENTATIONS

SCHEDULE YOUR CLASS TODAY!
Contact the Northwest Marketing Department:
800.443.1800 marketing@martinmartin.com

• **All your coursework, our guarantee to be great!**
We also offer all classes virtually. Each class funds itself on fees.

• **Martin/Martin will coordinate and provide**
seminar materials for all in-person seminars at no cost to you!

• **Architects can earn 2.0 Learning Units per**
class. Martin/Martin reports, documents AIA and delivers certificates to attendees within 20 days of the presentation.

ARCHITECTURALLY EXPOSED STRUCTURAL STEEL

1 LU/1H00 This course reviews and processes that affect the finish and aesthetic qualities of structural steel. We will review the standard of practice, fabrication, preparation, painting, and cost premiums. Projects discussed include Bangkok International Airport and Civic Field.

COLD-FORMED STEEL SYSTEMS

1 LU/1H00 This course explores advantages and disadvantages of various structural systems in use today. The focus will be on cold-formed steel bearing wall systems as a viable alternative to traditional systems.

COMPOSITES IN ARCHITECTURE

1 LU/1H00 Composite materials offer wide applications in many industries due to their high strength, durability, and design flexibility. We will discuss examples where composites have been used in practice and will also consider their historical roots and the requirements used in manufacturing.

EXPOSED WOOD ARCHITECTURE

1 LU/1H00 This course explores different aspects of wood as a building material, including its unique properties resulting from natural insulation, timber frame, connections, sustainability and fire resistance. We will discuss the past and future of timber construction.

FAÇADE ACCESS AND FALL PROTECTION

1 LU/1H00 Façade access and fall protection systems have been used for hundreds of years. We will discuss the historical standards that govern these systems and how they are incorporated into the design and retrofit of new and existing buildings.

INNOVATIVE SITE DESIGN & COLORADO WATER LAW

1 LU/1H00 100% an eco-tourist legal, beneficial use of domestic water, we will review drainage facility designs, noting their opportunities and challenges. The class will assess current Colorado water laws, how they were derived, and how they have evolved.

LESSONS LEARNED FROM BUILDING ENVELOPE FAILURE

1 LU/1H00 This class will review the building envelope failures encountered in a residential complex. These included deterioration of the cladding materials, deteriorated sheathing and stud framing, mold growth caused by water infiltration, and roofing assembly deficiencies.

MASS TIMBER ARCHITECTURE

1 LU/1H00 This course provides a deep dive into designing with mass timber. Gravity and lateral bracing systems of mass timber are described in a real-world project. Specific construction details highlight both internal connections and how the frame connects to exterior walls and foundations.

OPTIMIZING ENTITLEMENT MANAGEMENT

1 LU/1H00 Navigating the entitlement process can greatly impact a municipal or jurisdictional project's schedule and requirements. Gain an understanding of the importance and extent of the entitlement process and how to use it to affect projects.

SECURITY BY DESIGN AND BLAST EFFECTS

1 LU/1H00 Designers can help clients with security planning and blast mitigation in buildings. Learn how concepts behind blast resistance, blast resistant glazing, progressive collapse, and how architectural layout and site configuration can improve performance.

STRUCTURAL DESIGN OF HEALTHCARE FACILITIES

1 LU/1H00 Design for healthcare focuses on patient comfort, future flexibility, sensitive equipment, special architectural features, and access over design approaches in typical design. Learn the unique challenges encountered by our healthcare facility design teams.

STRUCTURAL FORM AND ARCHITECTURAL CONCRETE

1 LU/1H00 There are various forms, casts, and components of architectural and structural concrete. Learn the differences and become familiar with model specifications, standard qualifications, and recent advances in architectural concrete technology.

STRUCTURAL GLASS AND SPECIALTY GLAZING

1 LU/1H00 Obtain an in-depth understanding of structural glass, the differences in manufacturing and performance between types, and rules that minimize the overall cost of glass and supporting structure. Learn how a staircase can be constructed entirely of glass and metal hardware.

STRUCTURAL PATHOLOGY: DIAGNOSIS OF PROBLEMS IN EXISTING STRUCTURES

1 LU/1H00 This course builds on a metaphor of a damaged or distressed existing structure as a patient being treated by a team of engineers and other consultants to provide a remedy. Attendees will learn strategies in the diagnosis and remediation of problems in existing buildings.

SUSTAINABLE DESIGN

1 LU/1H00 This class will provide a deeper understanding of sustainable practices, designs, tools, and materials for civil and structural engineering projects. It will also outline sustainable civil and building certification and provide an update on relevant local legislation for future public projects.

THE ENGINEERING OF ART - LESSONS FOR ARCHITECTS

1 LU/1H00 Learn the mechanics that cause most growth, not only to identify them in knowledge work, but to avoid them in design work. We cover basic fluid and thermo-dynamic principles, relevant codes, and how to quantify the risk of structural growth.

THERMAL AND MOISTURE ANALYSIS OF BUILDING ENVELOPES

1 LU/1H00 Learn the mechanics that cause most growth, not only to identify them in knowledge work, but to avoid them in design work. We cover basic fluid and thermo-dynamic principles, relevant codes, and how to quantify the risk of structural growth.

AIA Continuing Education

MARTIN/MARTIN CONSULTING ENGINEERS

WE LOVE TO SHARE OUR EXPERTISE

Martin/Martin has been fortunate to work on incredibly progressive projects over the years, from high-impact sustainable vertical designs to cutting-edge horizontal and drainage work. We initiated and drove the implementation of the first water reuse project in the region, and we are continuing our progressive ideas through both our private and public sectors. Requests to showcase our experience and lessons learned through a presentation of case studies have increased, and our goal of industry thought leadership continues to grow.



Raleigh Fisher, who leads our Northwest Arkansas office, published an article titled “Tornadoes, a Devastating Reminder in Emergency Preparedness”

Patrick McManus co-authored the cover story in Modern Steel Construction’s November issue.

Modern Steel Construction

November 2023



click to read article



click to read article

28
MARTIN/MARTIN
PROJECTS WON
AWARDS IN 2023



CSU SPUR Campus TERRA Building | 2 Awards, including
ENR Mountain States Best Specialty Construction



CSU SPUR Campus HYDRO Building
5 Awards: CFSEI, NAIOP, ENR, ACEC



Photo by Conor Culver courtesy of Populous

The Southeast Aurora Rec Center won ENR Mountain
States Best Sports/Entertainment Project



UHealth Inpatient Pavilion 3
ACEC Colorado Award of Excellence



Gunnison County Public Library
AIA Colorado Design Award



633 Folsom in San Francisco features custom-designed and fabricated fiber-reinforced panels.

INNOVATION

Martin/Martin is focused on being a leader in structural and civil engineering innovation, delivering cutting-edge solutions that enhance the performance, sustainability, and resilience of the built environment. We use the latest technologies and methods to design building systems and infrastructure projects that meet the needs and expectations of our clients. We are always looking to foster new ways of improving our efficiency, quality, and safety, as well as reducing our environmental impact and carbon footprint.

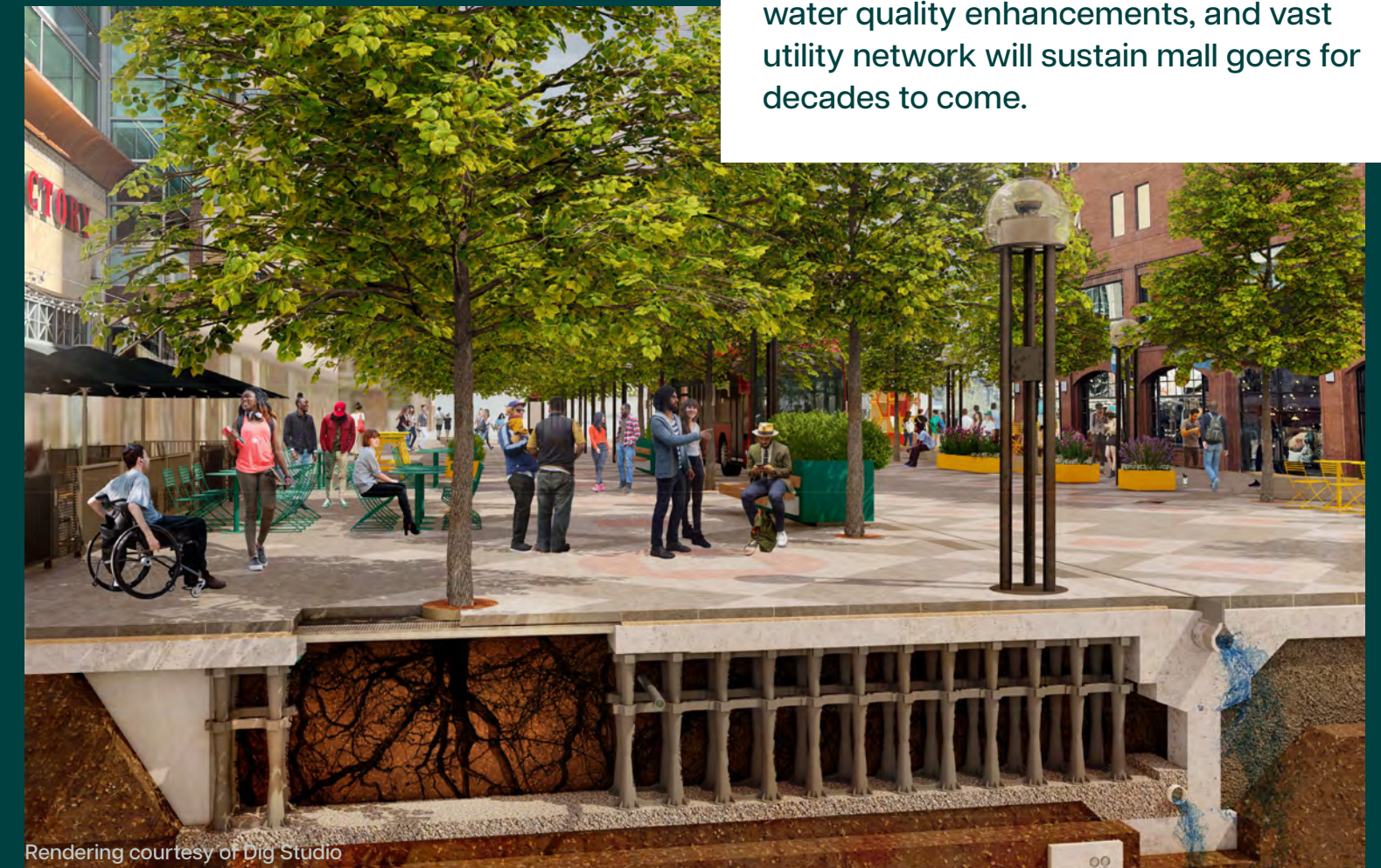


Our “**Innovative Site Design & Colorado Water Law**” AIA continuing education class highlights the innovative possibilities of the legal, beneficial use of stormwater. We review innovative drainage facility designs, noting their opportunities and challenges. The class also assesses current Colorado water laws, how they were derived, and how they have evolved.



16TH STREET MALL RENOVATION

A multidisciplinary team of more than 60 employees and 5 sub-consultant firms collaborated to develop 16th Street into a creative nexus of urban infrastructure. While most patrons will appreciate the activated public spaces, shady tree canopy, and seamless pattern of granite pavers, the hidden innovations within this urban ecosystem of underground transitway walls, modular suspended pavement, grooved concrete sub-slab drainage, water quality enhancements, and vast utility network will sustain mall goers for decades to come.



Rendering courtesy of Dig Studio



Our Construction Engineering Services group stretches boundaries with our industry partner BLUvera (the prefabrication subsidiary of Mortenson Construction). Shown here on the **Penn State Lasch Building**, we are helping to bring manufacturing to the construction industry by engineering and modeling prefabricated components and assemblies in a factory setting to be installed on project jobsites. This allows our trade partners to work safer and faster with better quality control.

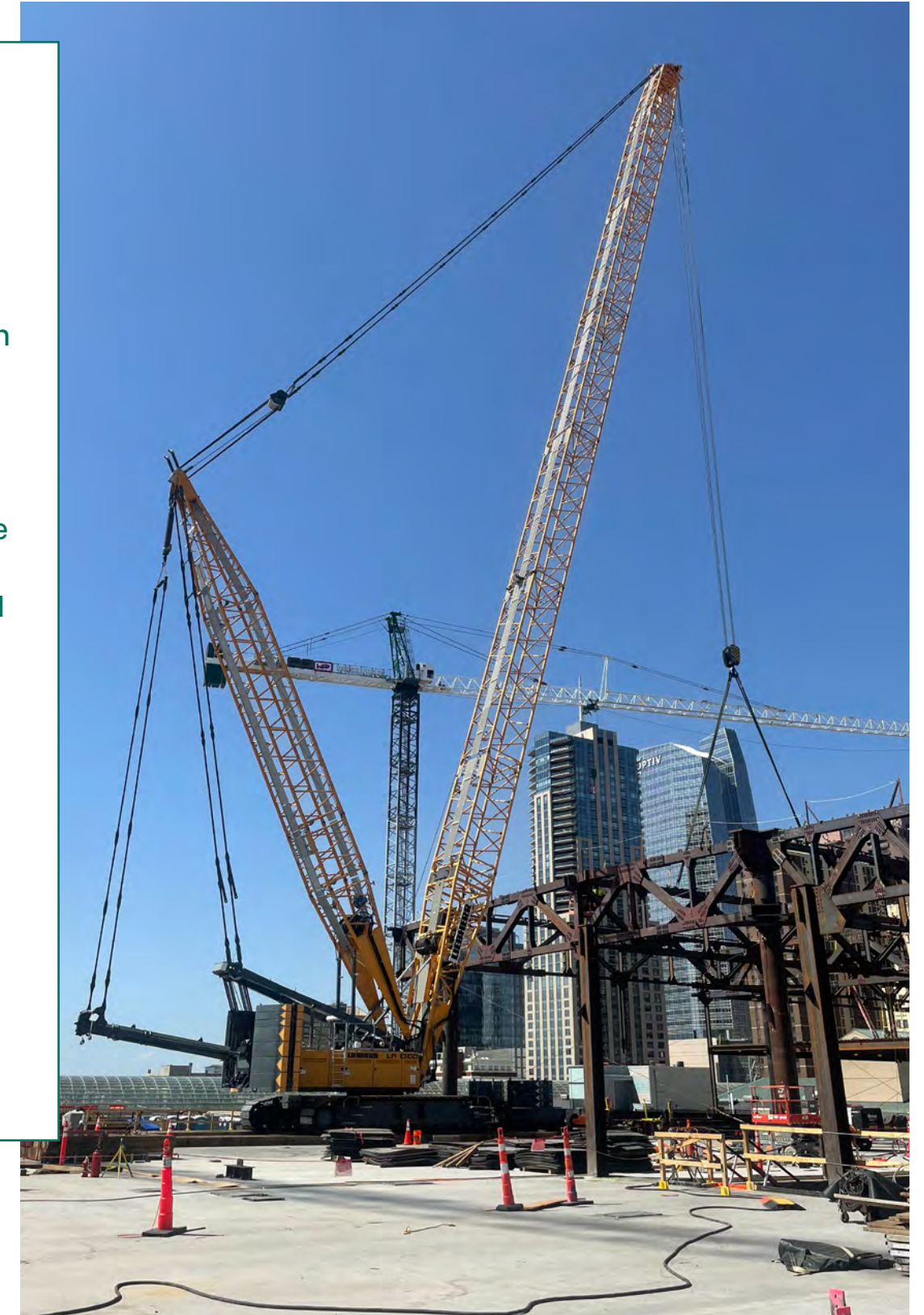


WE SHAPE THE FUTURE OF ENGINEERING

COLORADO CONVENTION CENTER

The Convention Center's expansion is almost complete! One of the largest overbuild expansion projects in the US, the renovation adds 200,000 SF of space above its existing facility. To overcome the challenges of this massive build, the design-build team collaborated closely to work within the limitations of the existing structure with minimal disruptions to the convention center's operations.

The expansion's unique features include cantilevered floor spaces, innovative use of existing columns, and multi-function floor trusses engineered to support a **500-ton crawler crane** the resided on the existing convention roof during construction.



“SHARK TANK” INNOVATION COMPETITION



Our panel of Sharks:
Elizabeth Jones, Structural Department Director; Shane McCormick,
President; and Matt Schlageter, Civil Department Director.

Martin/Martin's inaugural Innovation Competition was held in August with 15 teams of employees submitting their ideas focusing on new technology and internal tools to improve the workplace experience and efficiency. Six finalist teams presented before a panel of “Sharks” and two successful teams were selected to work on developing their ideas in the upcoming year. These teams will receive funding and billable hours to implement their innovations.



PyRevit Tools was the first winning team. They will work to utilize the Pyrevit platform and produce in-house tools written in Python to help improve our productivity and increase our accuracy.

Leveraging API in Analysis was the other winning team. Their idea is to use Application Programming Interface in analysis software to automate repetitive tasks and improve efficiency in our practice. This way, we can save time and money, and focus on the creative and innovative aspects of engineering.





Weidner Field is a multi-use stadium which serves as the home of Colorado Springs Switchbacks. It has a capacity of 8,000 for soccer games, but can be expanded to fit up to 15,000 for concerts and other events.

SUSTAINABILITY

Martin/Martin endeavors to lead the industry in sustainable practices and project designs. We are a signatory firm in the **SE 2050 commitment**, with the goal of implementing net-zero embodied carbon in all of our structural systems by 2050.

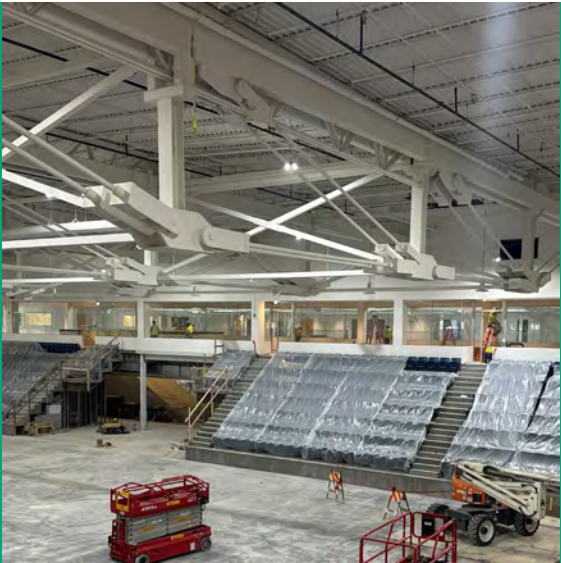


Alta Verde in Breckenridge is a net-zero, affordable housing project that will benefit the community for decades to come.

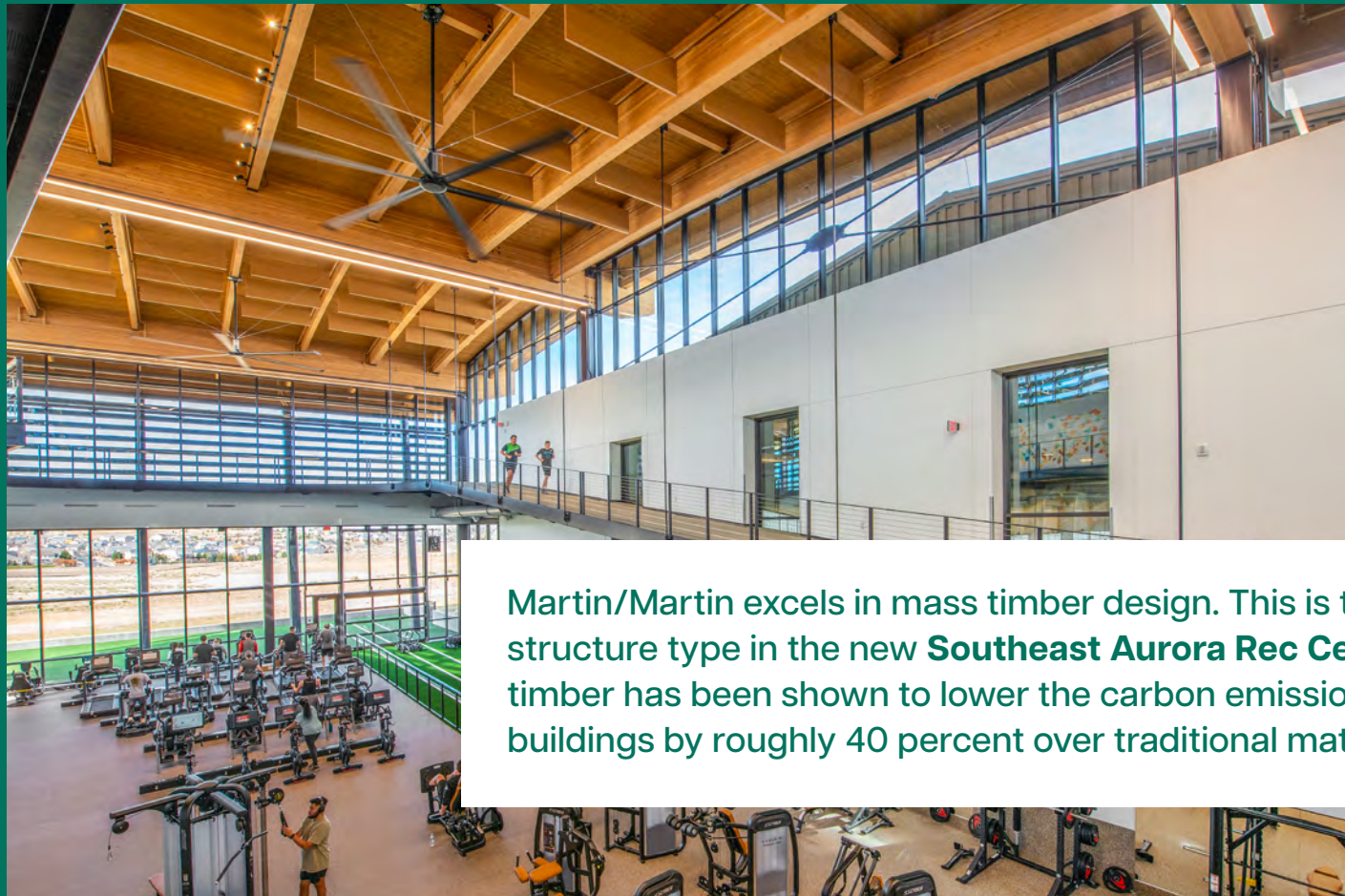


“The greenest building is the one that is already built”
-Carl Elefante, AIA

The transformation of a shuttered Macy’s building into the **WeStreet Ice Center** in Tulsa, Oklahoma shows the sustainable possibilities of building reuse.



ENGINEERING GREENER POSSIBILITIES



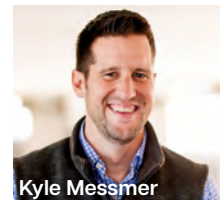
Martin/Martin excels in mass timber design. This is the main structure type in the new **Southeast Aurora Rec Center**. Mass timber has been shown to lower the carbon emissions of large buildings by roughly 40 percent over traditional materials.



This year, Martin/Martin added the first electric vehicle to our fleet. The car runs on **100% renewable energy** generated by our rooftop solar array.

HYDRO BUILDING

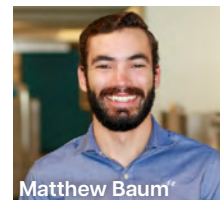
This building on the CSU SPUR Campus employs a wide range of sustainable design strategies and achieved LEED Gold certification. Through systems of **greywater reuse**, the building boasts a water savings of 264 gallons per day. A gravity-fed stormwater collection system brings water directly to the Water Quality Lab for pollutant testing, or into one of two “test plot” garden beds in the site’s back yard. Various species of plant life can be placed in these beds to study how pollutants affect their growth and health with the goal of identifying resilient plants.



Kyle Messmer



Zach Drury



Matthew Baum

ENVISION CERTIFICATIONS

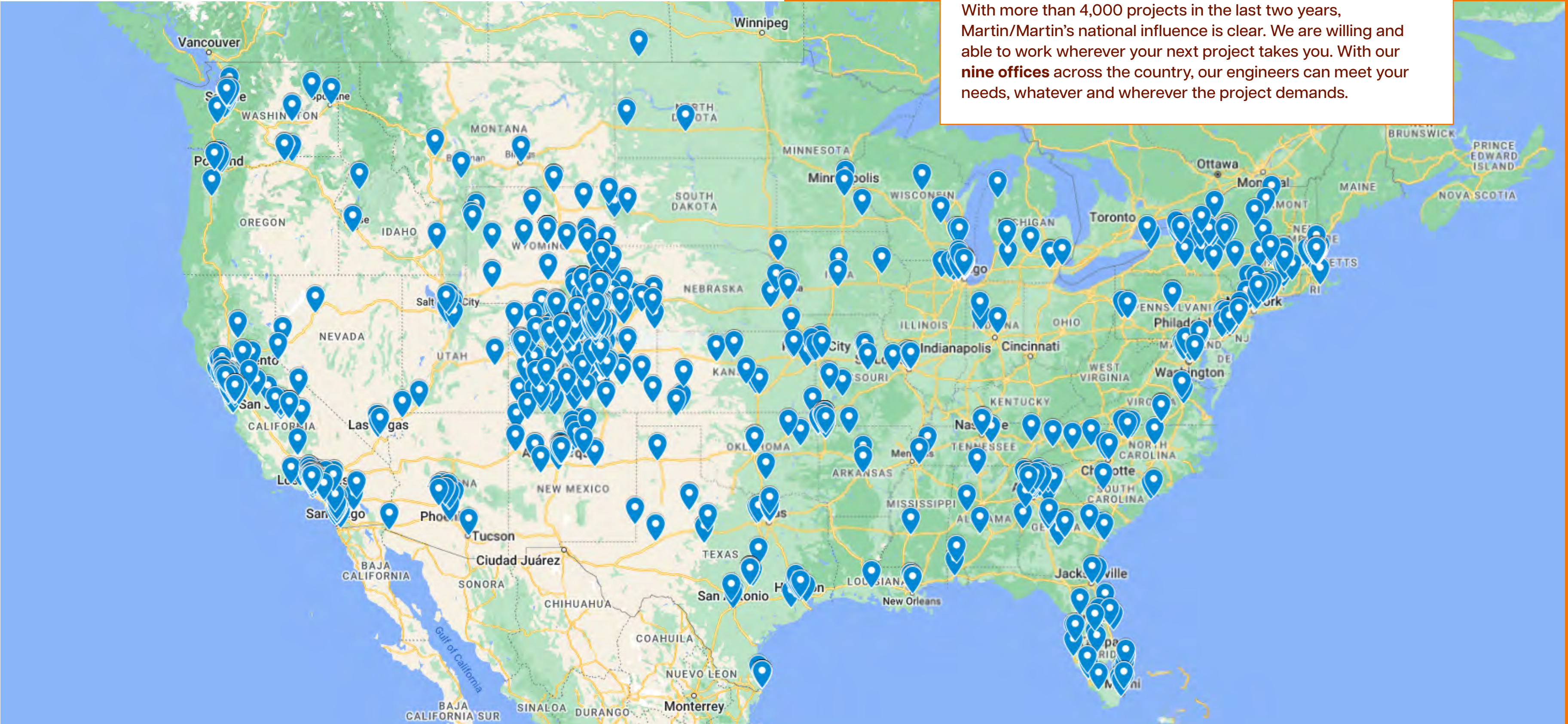
Similar to LEED for buildings, Envision is a national standard targeting the sustainability of site design.

Three engineers achieved Envision Certification this year. The Envision Framework is quickly becoming globally recognized as a highly credible approach to **sustainable, resilient, and equitable infrastructure**. Credentialing helps us understand how we can improve and assess the sustainability of our projects.



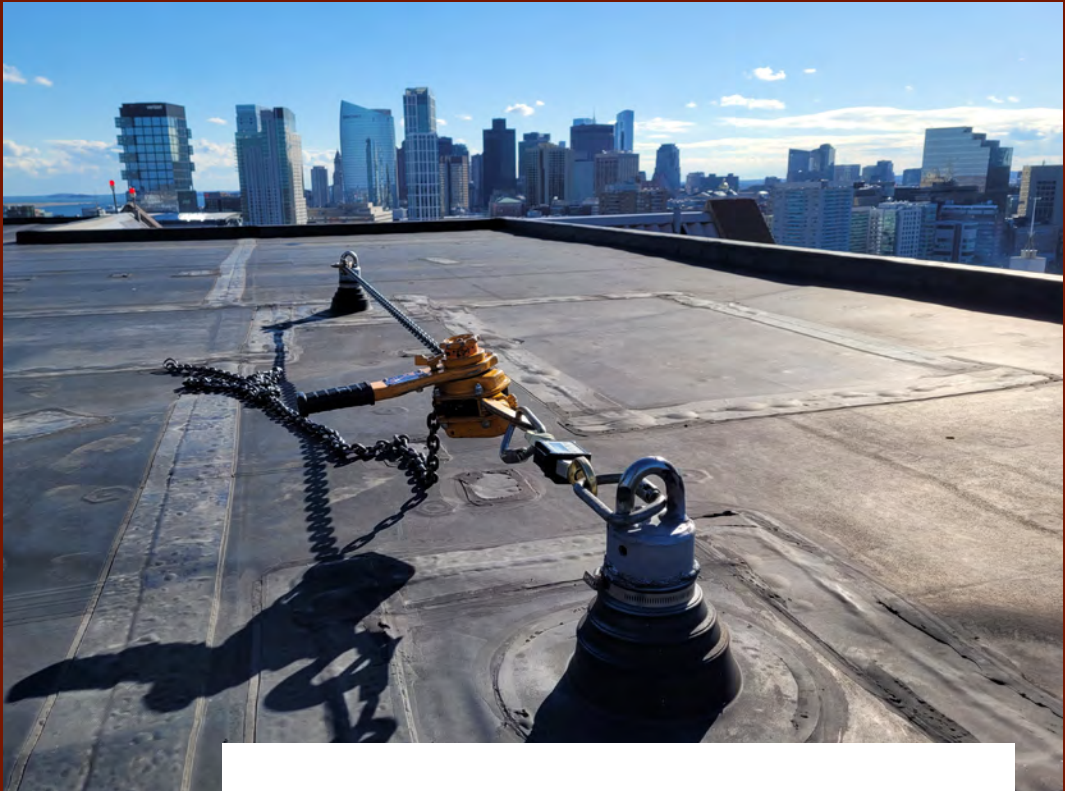
Roosevelt High School in Johnstown, Colorado

NATIONAL INFLUENCE

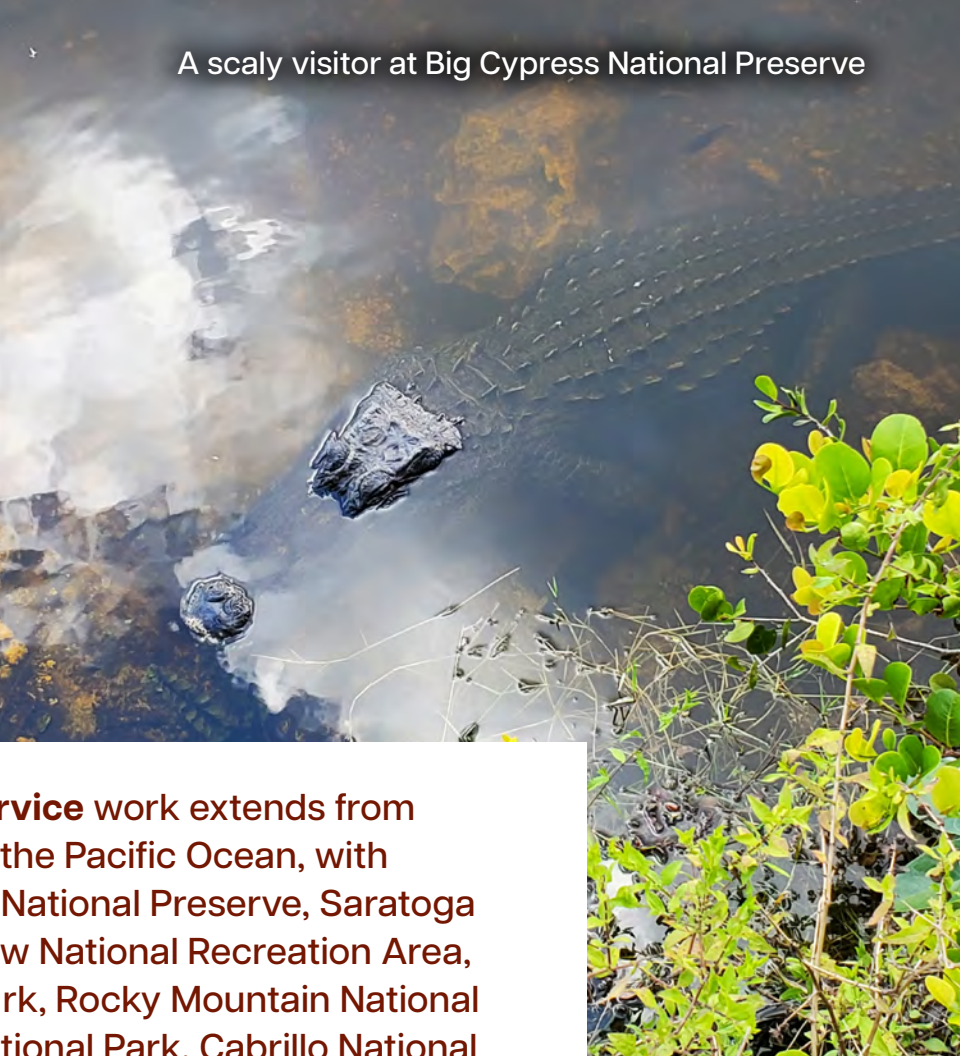


With more than 4,000 projects in the last two years, Martin/Martin's national influence is clear. We are willing and able to work wherever your next project takes you. With our **nine offices** across the country, our engineers can meet your needs, whatever and wherever the project demands.

WE GO WHERE YOUR PROJECTS ARE



Martin/Martin performs fall protection and façade access engineering support across the nation. We have worked on more than 400 façade projects this year.



2023 saw our **National Park Service** work extends from coast to coast and even across the Pacific Ocean, with projects located at Big Cypress National Preserve, Saratoga National Historic Park, Chickasaw National Recreation Area, Theodore Roosevelt National Park, Rocky Mountain National Park, Sequoia-Kings Canyon National Park, Cabrillo National Monument, and Hawaii Volcanoes National Park, to name a few. The scope of services for these projects ranges from employee housing, campground reconstruction, water treatment system and storage replacement, to parking and roadway improvements, and new monument entrance signs.

Cabrillo National Monument

Hawaii Volcanoes National Park



STEDMAN PHILIPPON

The Steadman Clinic in Basalt, Colorado

CORPORATE TEAMS



Our Corporate staff, which includes Accounting, Administrative, I.T., Facilities, Marketing, and Human Resources departments have worked hard throughout the year to support our business goals and operations. We appreciate their dedication, expertise, and collaboration. They are the backbone of our organization, and we are proud of their achievements.

ACCOUNTING SENT

11,600

**INVOICES TO
OUR CLIENTS AND
CONSULTANTS**

**MARKETING STAFF
PREPARED**

445

**SUBCONSULTANT
PROPOSALS AND**

58

PRIME PROPOSALS

**THE ADMINISTRATIVE
TEAM PROCESSED**

5,863

**REQUESTS THROUGH
OUR NEW TICKET SYSTEM**

WE HOSTED

24

**HAPPY HOURS TO
SHOW APPRECIATION
TO OUR CLIENTS**

I.T. RESOLVED

5,569

TICKET REQUESTS



CIVIL ENGINEERING GROUPS

The CSU SPUR Campus HYDRO Backyard features innovative rainwater reuse systems.

DEVELOPMENT SERVICES



Our DSG group plans for the parts of your project that get buried. Stormwater infrastructure, drainage improvements, and underground utilities are their areas of expertise. They also provide services for master planning, land development, due diligence, and every aspect of surveying.



The **Clear Creek Crossing** development included the reconfiguration of the I-70 and 32nd Avenue interchange as well as local roadway connections to the development. Additional design elements included bridge design, intersection and traffic signal design, utility design, and erosion control. This project requires extensive coordination with several CDOT Region 1 representatives.

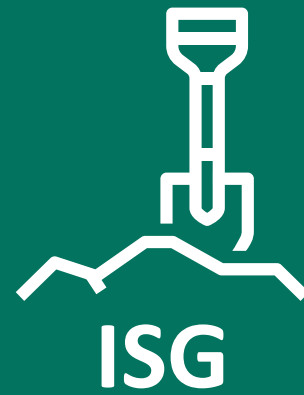


The **Hoffman Way** drainage improvements included the addition of stormwater drains, custom inlet structures, and the replacement of existing pipe with concrete box culverts. These storm sewer improvements removed private residences from the 100-year floodplain.

INFRASTRUCTURE SERVICES



Martin/Martin's ISG group specializes in transportation engineering, water and wastewater treatment, National Parks and Special District work, and construction program management. In each phase of your site's development, they are here to help.



The design of the **Larimer County Behavioral Health Building** involved multiple teams within Martin/Martin. The site design was done by the Infrastructure Group; the road widening design services by the Transportation team; the sewer, lift station, and force main by the Water Treatment team; and the stormwater detention elements by the Structural team.



Martin/Martin lead construction management for the rehabilitation and widening of the **West Dartmouth Avenue Bridge** over the South Platte River, including abutment extensions and wingwalls, box girder installation, full deck replacement, drainage structures, paving, traffic signals, and utility coordination.

SITE SOLUTIONS



Our SSG group focuses on large campuses of commercial, medical, education, cultural, or industrial projects. We work with owners and clients to provide a sustainable, innovative, and cost-effective design to support infrastructure of various types and sizes.



The **Medtronic Office** project is a three-building medical office campus. Site design included a new parking lot, water and sanitary infrastructure, drainage design, stormwater infrastructure, and a full spectrum detention pond.



The National Institute of Standards and Technology Building 1 is the main laboratory for research and measurements, including the world's leading quantum computing research programs, the most accurate atomic clocks, and the most unique superconducting devices. **The Wing 5 Expansion** site development included complete reconfiguring of two courtyards, installation of a rain garden, updated ADA routes, and significant utility, grading, and drainage upgrades.

STRUCTURAL ENGINEERING GROUPS



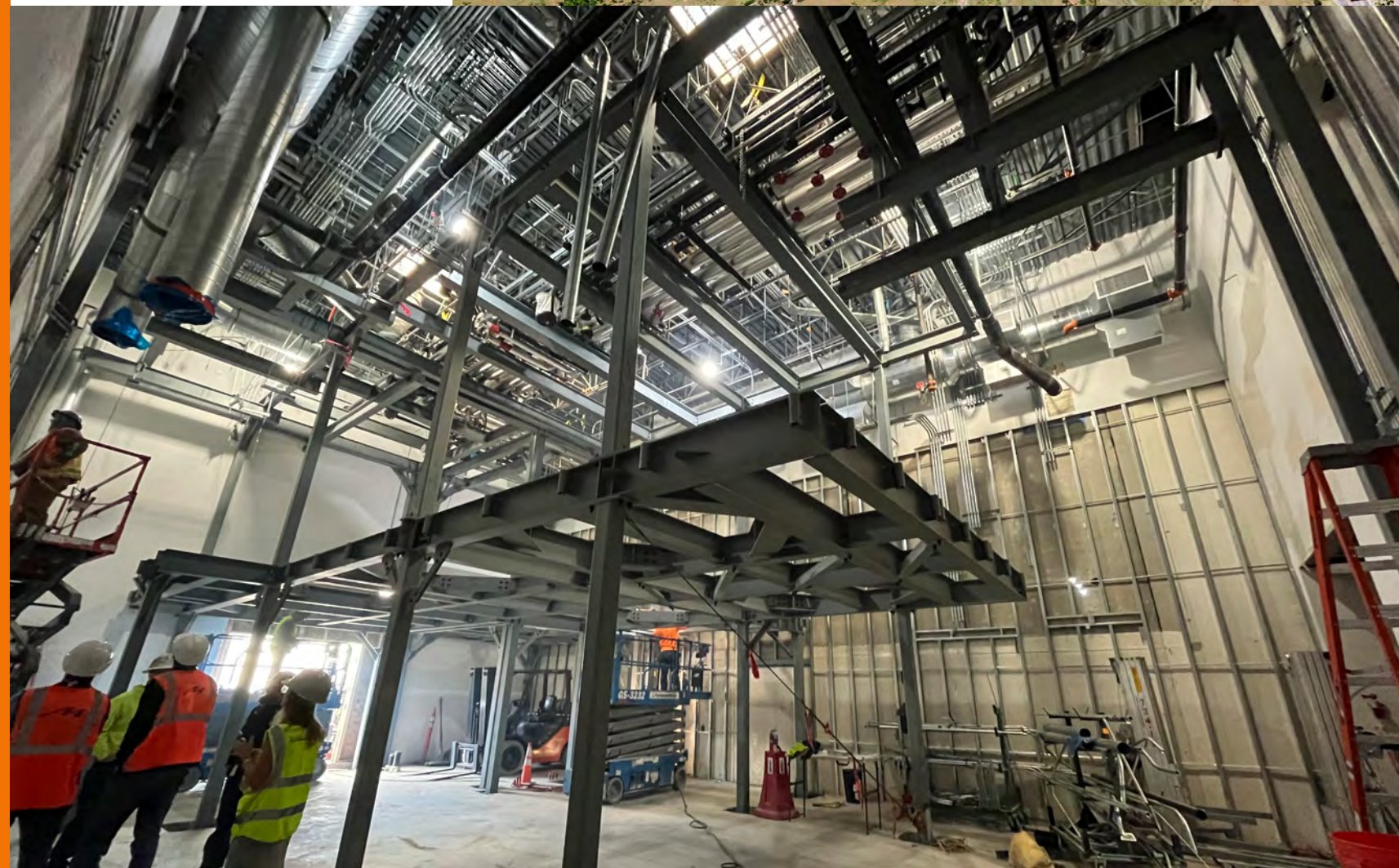
AEROSPACE, INDUSTRIAL, AND MANUFACTURING



Our AIM group, pictured at a Habitat for Humanity Build Day, focuses on projects in the advanced industries markets, including aerospace, manufacturing, clean rooms, and sensitive compartmented information facilities. They work on highly-sensitive and classified projects that require strict confidentiality.



The AIM group has many long-standing relationships with a variety of advanced industries clients. Our experience gives us insight into the expectations and requirements of future pursuits. These projects typically are equipment and mechanical system driven, which require strong relationships with our mechanical, electrical, and plumbing engineer partners.



BUILDING EVALUATION AND ENGINEERED REPAIR



Our BEER group, provides services related to the design, analysis, investigation, and maintenance of structures. They specialize in building envelope, façade access and fall protection, historic preservation, concrete repair, and expert witness services on projects across the country.



An investigation of the façade at the **Colonnade Lofts** on East Colfax in Denver.



Engineers performing
Electronic Leak Detection at
1557 Logan.

CONSTRUCTION ENGINEERING SERVICES



Our CES group offers a range of services, including cold-formed steel design and detailing, steel connection design and fabrication drawings, rebar shop drawings, tower crane foundations, and other construction-related services. Their steel and connection designs are award-winning.



Pennsylvania State University recently completed this 89,000 SF addition to the **Lasch Football Training Facility**. The structure includes both one- and two-story steel-framed sections and features a large glass curtain wall for visual access to the practice field and interior light within the facility.



Novel RiNo is a 12-story mixed-use development with street level commercial space and 271 apartments above a 433-stall parking garage. Martin/Martin provided miscellaneous metals design, including four stair cores with multiple railing types.

GOVERNMENT & INSTITUTIONAL



Our GIN group specializes in governmental, institutional, healthcare, and parks projects. Whether it is a new building, bridge, renovation, or restoration, they apply their expertise and creativity to ensure the safety, functionality, and aesthetics of the structures they work on.



The feature stair in the **HYDRO Building** on the CSU SPUR Campus at the National Western Center is the focal point of the entry space.



The **Centennial High School** replacement was part of Pueblo School District's 2019 BuildD60 Bond. The school provides the students, teachers, and communities with much-needed modern learning, athletic, and performing arts spaces.

SPORTS, ENTERTAINMENT, AND COMMERCIAL



The SEC group specializes in long-span structures. Arenas, convention centers, stadiums, commercial buildings, and airports are our specialties. Whenever you need an expansive, column-free space, our creative and innovative engineers are here to meet your project's needs.



Tahoe South Event Center in Stateline, Nevada is a 6,000-seat arena with 16 private suites and 9,000 SF of meeting and conference space. It required high seismic design principles based on the region of the project site.



The new **Steamboat Base Village** includes pedestrian walks, a glulam escalator canopy, a new glulam truss stage, and a promenade building with an ice rink whose roof features an elevated plaza.

MARTIN/MARTIN OFFICES



Built along the Razorback Greenway Trail in Bentonville, Arkansas, the Howard is an 80-unit mixed-use, multifamily building hosting the award winning Conifer restaurant.

LAKEWOOD HEADQUARTERS



Martin/Martin's Lakewood location houses the largest group of engineers company wide. With a staff of 350+ employees, more than 280 of us are in the Lakewood office. We have had a local presence for more than 80 years, and we love to help our clients solve problems.

CSU SPUR Campus at the
National Western Center



UHealth Anschutz Inpatient
Pavilion 3

ALBUQUERQUE



Our Albuquerque office has specialized in water and wastewater engineering services for years, and we now offer the full breadth of structural engineering services. Their expertise includes healthcare, education, industrial, and projects with local native tribe communities.

The **University of New Mexico Health Crisis Triage Center** uses Intermediate Moment Frames (IMF) to create an open space while ensuring appropriate lateral systems. IMFs give us the flexibility to work within the architect's limitations on column depths, while ensuring structural integrity and safety.



The **Chupadero Water System Improvements** included a new groundwater supply well, disinfection and uranium treatment, fire flow and storage, an alpha particle treatment system, and rehabilitation of an existing 20,000 gallon storage tank. **46**

AVON



Our Avon team offers an extensive array of civil and structural engineering services for many different market sectors, including building evaluation, park and site design, healthcare, commercial, hospitality, and high-end residential structures.

Alta Verde is an 80-unit, perpetually affordable, net zero apartment community in Breckenridge, which employed a creative public-private partnership with the Town.



The revitalization of **Dillon Town Park** included new playground facilities, gazebos, plazas, restrooms, climbing wall, baseball and soccer fields, and sidewalks and pathways. Our civil scope included utility design, storm drainage, ball fields, sidewalks, pathways, and playground areas.

BAY AREA



Our Bay Area office, located in Larkspur, California, is filled with fun-loving, creative, and passionate engineers. A game of ping pong in the conference room is perpetually imminent. They work on commercial, residential, education, and many other building types, especially projects in high-seismic areas.

The **Block 7** project in Redding, California includes the Shasta College Tower, a mixed-use commercial and residential tower, and an affordable housing mixed-use project.



This confidential clean room and subfab expansion project is located in an active manufacturing facility in California. The project is sequenced into a series of phases to permit continuous operation of the facility. The structural scope includes several new steel utility and equipment platforms over an existing utility yard.

NORTHWEST ARKANSAS



Our Northwest Arkansas office, located in Bentonville, has experience with local medical, educational, historic, commercial, sports, and cultural markets, and they continue to tap into new sectors as they build on established client relationships.

Midtown Lane is a 5-story, 175,000 SF Class A mixed use building with ground floor retail and office spaces above.



Market Center of the Ozarks in downtown Springdale provides crop aggregation capabilities, commercial kitchens, and community space for learning. It is a hybrid structural system featuring cross laminated timber, glulam beams, steel framing, and CMU walls.

FORT COLLINS



With a focus on expanding our civil engineering services in northern Colorado, our Fort Collins office is poised for increased growth in the coming years. We look forward to continuing to strengthen our ties with Colorado State University, industrial clients, and federal agencies.

Martin/Martin has completed 70+ projects for **Broadcom, Inc.**, including building expansions, cleanroom additions, new construction, and site development.



Our work with **Vestas Blades** includes more than 75 projects, and we are proud to work with a leader in wind power and sustainable technology.

MARTIN/MARTIN WYOMING



Martin/Martin Wyoming, boasting the largest engineering staff outside of our Lakewood headquarters, is located in Cheyenne. They provide civil and structural design services in numerous market sectors throughout Wyoming and the surrounding states.

Featured in the November issue of Modern Steel Construction Magazine, Martin/Martin provided steel connection design and civil engineering services for the new 31-floor, high-rise office building at **1900 Lawrence** in Denver.



The new **Loveland Fire Station #10** features an apparatus bay with arched openings and a massive clerestory to bring natural light into the space.

KANSAS CITY



Andrew Lack (left) leads our Kansas City office, leaning on his extensive local industry experience and client relationships; he is supported by a large team of engineers in Colorado. We are continuing to expand Martin/Martin's presence in the local market.



ATLANTA



Martin/Martin's Atlanta office is quickly growing in both service offerings and engineering staff. Our national industry knowledge, combined with our local experience, position our newest office as the perfect launchpad to provide exceptional engineering design in the southeast.





MARTIN/MARTIN

CONSULTING ENGINEERS

2023
YEAR IN REVIEW